

❖ Certification in Telecommunications Standards – NOM ProgramContent:

- ❖ Accredited Standards
- ❖ Legal Requirements to register the company
- ❖ Certification Process
- ❖ Certification schemes
- ❖ Technical Documentation Required by Scheme

➤ Accredited Standards

- **NOM-196-SCFI-2016, “Products. Terminal Equipment connected or interconnected by means of a wired access to a public telecommunications network”, which uses the technical provision:**

IFT-004-2016: “Interface to public networks for terminal equipment.”

Applies to all terminal equipment that is connected or interconnected through a wired access to a public telecommunications network which intent is to be manufactured, imported, marketed, distributed and/or leased within the territory of the United Mexican States must meet the mechanical and electrical specifications, as well as the test methods, of the minimum necessary technical parameters indicated in the Technical Provision IFT-004-2016, Interface to public networks for terminal equipment.

- **NOM-208-SCFI-2016 “Products. Radiocommunications systems using the dispersed spectrum technique-Frequency hopping and digital modulation radiocommunication equipment to operate in the bands 902 MHz-928 MHz, 2400 MHz-2483.5 MHz and 5725 MHz-5850 MHz-Specifications and test methods”, which uses the technical provision:**

IFT-008-2015: “Radiocommunications systems using the dispersed spectrum technique-Frequency hopping and digital modulation radiocommunication equipment to operate in the bands 902 MHz-928 MHz, 2400 MHz-2483.5 MHz and 5725 MHz-5850 MHz-Specifications and test methods.”

Applies to all radio communication equipment that uses the dispersed spectrum technique, frequency hopping and digital modulation to operate in 902 MHz - 928 MHz, 2400 MHz - 2483.5 MHz and 5725 MHz - 5850 MHz bands and which intent is to be imported, marketed and/or distributed within the territory of the United Mexican States must meet the minimum specifications and limits, as well as the test methods of the parameters indicated in Technical Provision IFT-008-2015.

- **NOM-218-SCFI-2017** “Digital Interface to public networks (Digital Interface to 2 048 KBIT/S and 34 368 KBIT/S).”, using the technical provision:

IFT-005-2016: “Digital Interface to public networks (Digital Interface to 2 048 KBIT/S and 34 368 KBIT/S).”

Applies to all radio communication equipment that has the digital interface at 2 048 kbit / s and 34 368 kbit / s, also called E1 and E3, respectively which intent is to be imported, marketed and/or distributed within the territory of the United Mexican States must meet the minimum specifications and limits, as well as the test methods of the parameters indicated in Technical Provision IFT-005-2016: Digital interface to public networks (2,048 kbit/s and 34,368 kbit/s).

- **NOM-221-SCFI-2017** “Specifications for mobile terminal equipment that may make use of the radio spectrum or be connected to telecommunications networks. Part 1. Equipment Manufacturing Identity Code (IMEI) and FM sound broadcasting receiver functionality”, which uses the technical provision :

IFT-011-2017: “Specifications for mobile terminal equipment that may make use of the radio spectrum or be connected to telecommunications networks. Part 1. Equipment Manufacturing Identity Code (IMEI) and FM sound broadcasting receiver functionality.”

It applies to all those Mobile Terminal Equipment that may make use of the radio spectrum or be connected to telecommunications networks.

- **NOM-221/2-SCFI-2018** “Technical specifications of mobile terminal equipment that may make use of the radio spectrum or be connected to telecommunications networks. Part 2. Mobile terminal equipment operating in the 700 MHz , 800 MHz, 1900 MHz, 1700 MHz/2100 MHz and/or 2500 MHz bands.”, using the technical provision:

IFT-011-2017: “Technical specifications of mobile terminal equipment that may make use of the radio spectrum or be connected to telecommunications networks. Part 2. Mobile terminal equipment operating in the 700 MHz , 800 MHz, 1900 MHz, 1700 MHz/2100 MHz and/or 2500 MHz bands”.

Applies to all those Mobile Terminal Equipment that can make use of the radio spectrum in the frequency bands of 700 MHz, 800 MHz, 850 MHz, 1900 MHz, 1700 MHz / 2100 MHz and / or 2500 MHz or be connected to telecommunications networks.

- **IFT-011-2022: “Technical specifications of mobile terminal equipment that may make use of the radio spectrum or be connected to telecommunications networks. Part 3. Cellular Broadcasting service for notification in case of Risk or Emergency situations”.**

Applies to all those Mobile Terminal Equipment (cell phones and/or smart phones) that can make use of the radioelectric spectrum or be connected to telecommunications networks, for the reception and processing of Alert Messages for Risk or Emergency Situations through the Cellular Broadcasting Service. Mobile Terminal Equipment that are making use of international roaming within the national territory, as well as smart watches (smartwatches) that have a SIM or eSIM, and are compatible with the Cellular Broadcasting Service, are exempted.

- **IFT-012-2019 “ Technical specifications for compliance with the maximum limits of non-ionizing radiofrequency electromagnetic radiation of products, equipment, devices or apparatus intended for telecommunications that may be connected to a telecommunications network and/or make use of the radio spectrum. Specific Absorption Rate (SAR)**

Applies to products, equipment, devices or apparatus which have a radio frequency transmitter or transceiver, make use of the radio spectrum or may be connected to a telecommunications network in the 30 MHz to 6 GHz frequency range and which are used:

- a) Near the head, particularly near the ear, in the 300 MHz to 6 GHz frequency range, and/or
- b) At a distance less than or equal to 200 mm from the human body, in the 30 MHz to 6 GHz frequency range.

➤ **Legal Requirements to register the company**

LEGAL DOCUMENTATION *(Only for the first time customer)*

Para persona Moral:

- a) A certified copy of the articles of incorporation executed before a public officer, where it is evidenced that such legal entity is formally established in Mexico.
- b) Certified copy of the instrument raised before a public federate where the person signing the certification request is accredited as the legal representative of the interested party.
- c) Simple copy of the official identification of the legal representative of the interested party.
- d) Simple copy of the Federal Taxpayers Registry of the interested party (RFC).
- e) Copy of the Registration in the Federal Taxpayer Registry of the interested party issued by the SHCP (Except for definition of family).
- f) If the interested party declares the existence of affiliates and/or subsidiaries or wishes to include in the certificate, affiliates, subsidiaries and importers, the following must be submitted:
 - letter under oath listing such affiliates and/or subsidiaries, a certified copy of the articles of incorporation drawn up before a notary public, where such affiliates and/or subsidiaries are accredited as such, must be submitted;

- Affiliates, subsidiaries and / or importers, who will use of the certificate, must present evidence of address in the United Mexican States and simple copy of the Federal Taxpayer registry (RFC) of each.
- Written declaration in free format with autograph signature in which customer indicates being responsible for the use given to the Certificate, as well as to inform the Certification Body in a timely manner, where appropriate, of any anomaly detected in the use of the Certificate by the affiliates, subsidiaries and / or Importers, which may cause non-compliance with the provisions of the applicable technical provision or the Conformity Assessment procedure.
- Written declaration in free format with autograph signature of the affiliates, subsidiaries and / or importers, in which they indicate that they accept to be included in the certificate and accept to be jointly responsible for the use of the certificate, that they commit to be subject to the terms and conditions established in the Conformity Assessment procedure, including the surveillance of the certification, in the same terms as that signed by the interested party.
- In addition to the interested party's contract, service contract signed between the certification body and each affiliate, each subsidiary and / or each importer to be included and listed in the application for certification or reissuance, in order to be subject to the terms and conditions established in the Conformity Assessment Procedure, as well as to the corresponding surveillance, in the same terms as the one signed by the interested party.
- Written declaration in free format with autograph signature in which the customer indicates the commitment to inform in writing to the certification body and the Institute, about the exclusion of affiliates, subsidiaries and importers that are included in the Certificate, indicating the date from which they should no longer be considered with that character and request the reissuance of the respective Compliance Certificate; the foregoing does not exempt the affiliates, subsidiaries and importers that were excluded from the Certificate from being subject to surveillance of compliance with the certification during the time they were included in the Certificate.

For natural person:

- a) Simple copy of the official ID.
- b) If business activity is registered, submit a copy of the Tax Situation Card that proves the address formally established in Mexico.
- c) Simple copy of the Federal Taxpayers Registry (RFC). (Except for Family Definition)
- d) Copy of the registration of the RFC of the interested party issued by the SHCP. (Excl. Family Definition)
- e) If the natural person wishes to include importers in the certificate, the following must be submitted:
 - Evidence that the importer is domiciled in the United Mexican States.
 - Simple copy of the RFC of each of the importers.
 - Written declaration in free format with autograph signature in which it indicates to be responsible for the use that is given to the Certificate, as well as to inform the Certification Body in a timely manner, where appropriate, of any anomaly detected in the use of the Certificate by the Importers, which may cause non-compliance with the provisions of the applicable technical provision or the Conformity Assessment procedure.
 - Written declaration in free format with importer's autograph signature, in which they indicate they accept to be included in the certificate and accept to be jointly liable for the use of the certificate, they commit to abide by the terms and conditions established in the Conformity Assessment procedure, including the surveillance of the certification, in the same terms as that signed by the interested party.
 - Service Contract signed between the certification body and the importer(s) to be included and listed in the application for certification or reissuance, in order to be subject to the terms and conditions established in the Conformity Assessment procedure, as well as the corresponding surveillance, in the same terms as that signed by the interested party.

- Written declaration in free format with autograph signature in which the customer indicates the commitment to inform in writing to the certification body and the Institute, about the exclusion of importers that are included in its Certificate, indicating the date from which they should no longer be considered with that character and request the re-issuance of the respective Certificate; the foregoing does not exempt importers who were excluded from the Certificate from being subject to surveillance to the certification during the time they were included in the Certificate.

For Product Family Definition service

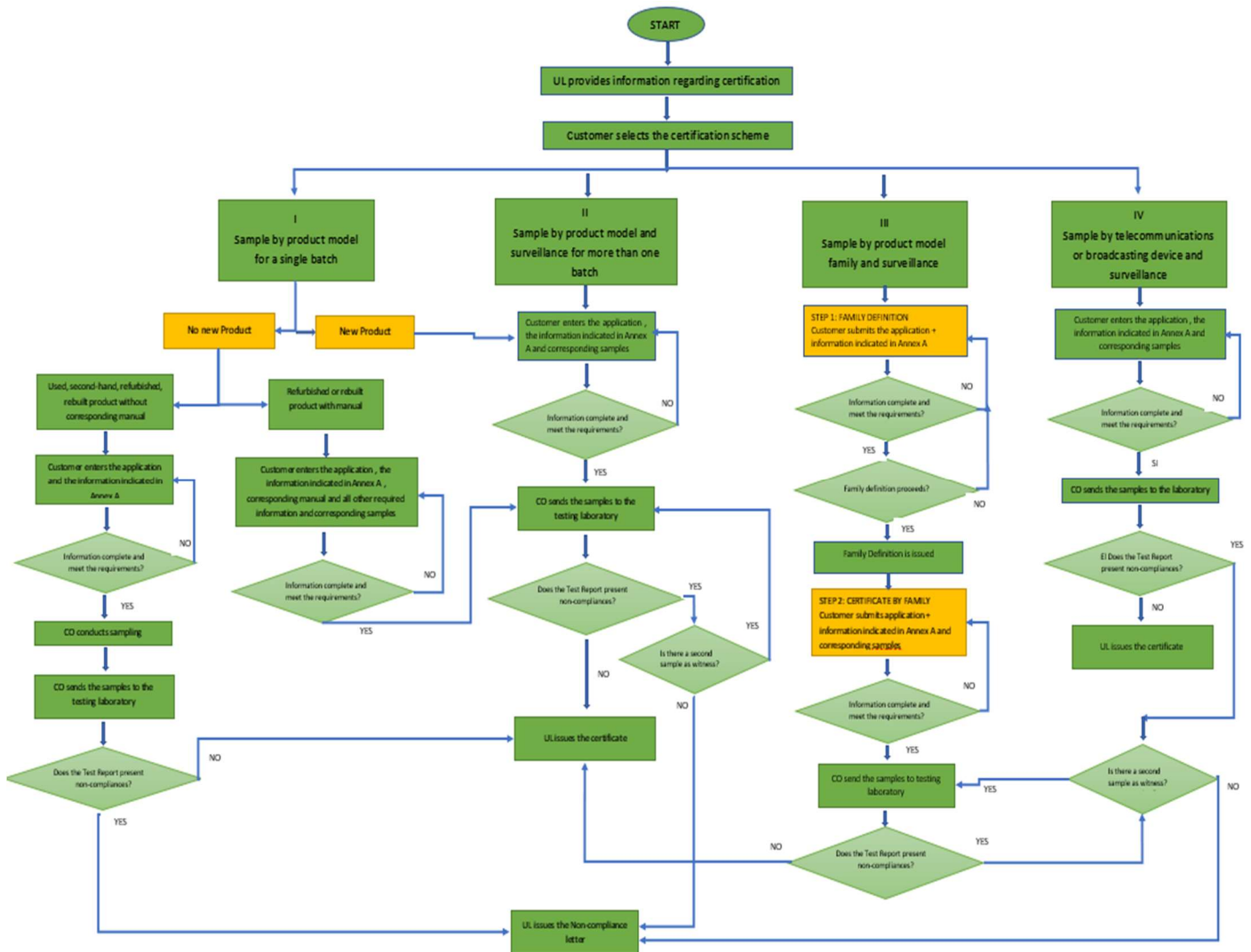
All of the above, except

- Copy of the Applicant's Federal Taxpayers Registry (RFC) and, where appropriate, of the affiliates and/or subsidiaries and
- Copy of the Tax Situation Card that accredits the interested party and, where appropriate, the affiliates and / or subsidiaries with formally established domicile in Mexico.

For Product Group Definition service

- a) Certified copy of the instrument raised before a public federation where the person who signs the certification application is accredited as the applicant's representative, and their attributions and, where appropriate, for the affiliates and / or subsidiaries, the corresponding for their legal representatives.
- b) Simple copy of the official identification of the legal representative and, where appropriate, the legal representatives of the subsidiaries and/or affiliates
- c) For natural person, simple copy of the official identification to accredit the signature on the application.
- d) Original and duly signed copy of the service contract signed by the applicant and the certification body. This requirement only applies when the certification body certifying the product is an accredited and approved one.

➤ **Certification Process**



➤ **Certification Schemes**

I. SAMPLE BY PRODUCT MODEL FOR A SINGLE BATCH

- ✚ This scheme applies to new, used or second-hand, rebuilt or refurbished products.
- ✚ Applies to a single batch of the product with the same mark and model.
- ✚ The certificate is valid indefinitely.
- ✚ The certificate indicates the number of products covered by this certificate, the corresponding serial numbers, and the characteristics of the certified Lot.

II. SAMPLE BY PRODUCT MODEL AND SURVEILLANCE FOR MORE THAN ONE BATCH

- ✚ This scheme applies to several batches of the same mark and model of the new product or product prototype.
- ✚ The certificate is valid indefinitely.
- ✚ The certificate indicates the characteristics of the certified lot and the number of products that make up each of the batches.
- ✚ Surveillance visits are carried out in warehouses and points of sale owned or leased by the owner, affiliates, subsidiaries and / or importers on identifiable products and in closed packaging.
- ✚ For the certificate extension, holder needs to submit the application and a free format letter stating that the additional lot contains a certain number of products which are of the same mark and model as those of the reference certificate.

III. SAMPLE BY PRODUCT MODEL FAMILY AND SURVEILLANCE

- ✚ This scheme applies to a family of New Product Models or product prototypes.
- ✚ The certificate is valid indefinitely.
- ✚ The certificate indicates the characteristics of the certified product model family.
- ✚ Surveillance visits are carried out in warehouses and points of sale owned or leased by the owner, affiliates, subsidiaries and / or importers on the family of identifiable product models and in closed packaging.
- ✚ For the extension of the certificate, it will be subject to the provisions of Article 11 of the PEC with the exception of sections II and III.
- ✚ This scheme is made of two steps:

1) Obtaining the family definition of product models issued by the CO.

2) Certification by product model family.

The model family definition must comply with the following:

- Products of the same brand which present only aesthetic, or appearance variations shall be considered as belonging to the same family of product models, provided that the functionality is the same, and
- Products must present the same block diagram and demonstrate having cards for the transceiver or radio transmitter with the same arrangement of tracks, integrated circuits, components, antennas, frequencies, and operating technologies, among others, and the same functionalities of intended use with which they were built.

IV. SAMPLE BY TELECOMMUNICATIONS OR BROADCASTING DEVICE AND SURVEILLANCE

- ✚ This scheme applies to new telecommunications or broadcasting devices which functionality is focused on the Internet of Things (IoT), or to short-range radio communication or equipment for daily use.
- ✚ The certificate is valid indefinitely.
- ✚ The certificate indicates the characteristics of the certified telecommunications or broadcasting device.
- ✚ Surveillance visits are carried out in warehouses and points of sale owned or leased by the owner, affiliates, subsidiaries and / or importers on the family of identifiable product models and in closed packaging.
- ✚ For the extension of the certificate, the interested party will request the definition of Group of products or equipment of daily use which functionality is focused on the Internet of Things (IoT), or short-range radiocommunication, which contain the same telecommunications or broadcasting device according to Annex B of the Conformity Assessment Procedure. The above for the same brand, same technical characteristics, same functionalities of use, same type of product, different models and different commercial names of the aforementioned products or equipment of daily use which functionality is focused on the Internet of Things (IoT), or short-range radio communication, which contain the device. Once the CO defines the group for daily use products or equipment which functionality is focused on the Internet of Things (IoT), or short-range radiocommunication, which contain the corresponding device in accordance with the requirements of Annex A of this procedure, must inform the result to the interested party.

➤ Technical Documentation Required by Scheme

A) For certification scheme I, Sample by product model for a single batch, submit the following information:

▪ **New product:**

- 1) Application for certification for one of the indicated schemes, duly requisitioned and signed by the interested party.
- 2) Official identification of the interested party or the legal representative to manage the certification (original for comparison and copying).
- 3) If affiliates, subsidiaries and/or importers are declared, they must present a copy of the official identification of the legal representative of each of them.

- 4) Testing application requests duly signed by the interested party, for the chosen test laboratory, with the respective models of the type samples, according to Art.11 of the Conformity Assessment procedure and the "Guidelines for accreditation, authorization, designation and recognition of testing laboratories".
 - 5) If applicable, original test report issued by a recognized foreign laboratory. (I, II, III, IV)
 - 6) Schematic and/or block diagrams showing the technical design characteristics such as transceiver card or radio transmitter with the same arrangement of tracks, integrated circuits, components, antennas, frequencies, and operation technology, among others.
 - 7) If necessary, block diagram reflecting how the product will be connected to public telecommunications networks and/or make use of the radio spectrum.
 - 8) Technical specifications of the product, showing design characteristics such as frequency(s), power(s) and operating technology(s), among others.
 - 9) Instructions or product manuals describing all their functionalities of intended use, with which they were built during their respective process
 - 10) Photographs or digital or printed images, internal and external, of the product showing design features such as transceiver card or radio transmitter with the arrangement of tracks, integrated circuits, component, antennas and the like.
 - 11) Installation specifications, where applicable.
 - 12) The samples of the selected models, in factory closed packaging and identifiable. (I, II, III, IV)
 - 13) Letter of commitment under protest of telling the truth in which it is indicated and assumes the responsibility that the type samples presented are representative of the lot to be certified.
 - 14) Electronic list with the serial numbers of all the products integrating the Lot. This list will be sent to the Ministry of Economy along with the corresponding certificate through the electronic means designated by it.
 - 15) Deliver 1 type sample, and optionally a second sample, one of which is subjected to laboratory tests and the other is safeguarded as a witness in case the results on the first show non-compliance results, unless the technical provision specifically indicates the obligation to present more than one sample
- **Used or second-hand product that needs to be imported into the country:**
- 1) Application for certification for one of the indicated schemes, duly requisitioned and signed by the interested party.
 - 2) Official identification of the interested party or the legal representative to manage the certification (original for comparison and copying).
 - 3) If affiliates, subsidiaries and/or importers are declared, they must present a copy of the official identification of the legal representative of each of them.
 - 4) Testing application requests duly signed by the interested party, for the chosen test laboratory, with the respective models of the type samples, according to Art.11 of the Conformity Assessment procedure and the "Guidelines for accreditation, authorization, designation and recognition of testing laboratories".
 - 5) If applicable, original test report issued by a recognized foreign laboratory. (I, II, III, IV)
 - 6) Schematic and/or block diagrams showing the technical design characteristics such as transceiver card or radio transmitter with the same arrangement of tracks, integrated circuits, components, antennas, frequencies and operation technology, among others.
 - 7) If necessary, block diagram reflecting how the product will be connected to public telecommunications networks and/or make use of the radio spectrum.
 - 8) Technical specifications of the product, showing design characteristics such as frequency(s), power(s) and operating technology(s), among others.
 - 9) Instructions or product manuals describing all their functionalities of intended use, with which they were built during their respective process.

- 10) Photographs or digital or printed images, internal and external, of the product showing design features such as transceiver card or radio transmitter with the arrangement of tracks, integrated circuits, component, antennas and the like.
- 11) Installation specifications, where applicable.
- 12) The samples of the selected models, in factory closed packaging and identifiable. (I, II, III, IV)
- 13) Request the certification body to carry out the sampling, in accordance with the NMX-Z-12/2 in force, based on the Simple Sampling Plan for normal inspection with Special inspection level S-1 with an Acceptable Quality Level (EQS) of 2.5, to obtain the type samples that will be subjected to laboratory tests.
- 14) In the event that the number of Product Type Samples does not comply with any specification established in the applicable DT and is equal to or greater than the rejection number indicated in the current NMX-Z-12/2 standard, the lot will be rejected, and a letter of non-compliance is issued.

▪ **Rebuilt Product**

Without Reconstruction Manual:

- 1) Application for certification for one of the indicated schemes, duly requisitioned and signed by the interested party.
- 2) Official identification of the interested party or the legal representative to manage the certification (original for comparison and copying).
- 3) If affiliates, subsidiaries and/or importers are declared, they must present a copy of the official identification of the legal representative of each of them.
- 4) Testing application requests duly signed by the interested party, for the chosen test laboratory, with the respective models of the type samples, according to Art.11 of the Conformity Assessment procedure and the "Guidelines for accreditation, authorization, designation and recognition of testing laboratories".
- 5) If applicable, original test report issued by a recognized foreign laboratory. (I, II, III, IV)
- 6) Schematic and/or block diagrams showing the technical design characteristics such as transceiver card or radio transmitter with the same arrangement of tracks, integrated circuits, components, antennas, frequencies and operation technology, among others.
- 7) If necessary, block diagram reflecting how the product will be connected to public telecommunications networks and/or make use of the radio spectrum.
- 8) Technical specifications of the product, showing design characteristics such as frequency(s), power(s) and operating technology(s), among others.
- 9) Instructions or product manuals describing all their functionalities of intended use, with which they were built during their respective process
- 10) Photographs or digital or printed images, internal and external, of the product showing design features such as transceiver card or radio transmitter with the arrangement of tracks, integrated circuits, component, antennas and the like.
- 11) Installation specifications, where applicable.
- 12) The samples of the selected models, in factory closed packaging and identifiable. (I, II, III, IV).
- 13) Request the certification body to carry out the sampling, in accordance with the NMX-Z-12/2 in force, based on the Simple Sampling Plan for normal inspection with Special inspection level S-1 with an Acceptable Quality Level (EQS) of 2.5, to obtain the type samples that will be subjected to laboratory tests.
- 14) In the event that the number of Product Type Samples does not comply with any specification established in the applicable technical provision and is equal to or greater than the rejection number indicated in the current NMX-Z-12/2 standard, the lot will be rejected, and a letter of non-compliance is issued.

With Reconstruction Manual:

- 1) Application for certification for one of the indicated schemes, duly requisitioned and signed by the interested party.
- 2) Official identification of the interested party or the legal representative to manage the certification (original for comparison and copying).
- 3) If affiliates, subsidiaries and/or importers are declared, they must present a copy of the official identification of the legal representative of each of them.
- 4) Test requests duly signed by the interested party, for the chosen test laboratory, with the respective models of the type samples, according to Art.11 of the PEC and the "Guidelines for accreditation, authorization, designation and recognition of testing laboratories".
- 5) If applicable, original test report issued by a recognized foreign laboratory. (I, II, III, IV)
- 6) Schematic and/or block diagrams showing the technical design characteristics such as transceiver card or radio transmitter with the same arrangement of tracks, integrated circuits, components, antennas, frequencies, and operation technology, among others.
- 7) If necessary, block diagram reflecting how the product will be connected to public telecommunications networks and/or make use of the radio spectrum.
- 8) Technical specifications of the product, showing design characteristics such as frequency(s), power(s) and operating technology(s), among others.
- 9) Instructions or product manuals describing all their functionalities of intended use, with which they were built during their respective process
- 10) Photographs or digital or printed images, internal and external, of the product showing design features such as transceiver card or radio transmitter with the arrangement of tracks, integrated circuits, component, antennas and the like.
- 11) Installation specifications, where applicable.
- 12) The samples of the selected models, in factory closed packaging and identifiable. (I, II, III, IV) .
- 13) Product Reconstruction Manual.
- 14) Certificate of the quality management system of the factory rebuilding the product, as appropriate, by which an accredited and authorized CO for quality management systems, states such factory rebuilding the product complies with the requirements established in NMX-CC-9001-IMNC-2015 and ISO/IEC-9001-2015 or those that replace them, and which includes, within its scope, the quality control of the reconstruction lines of the products to be certified,
- 15) Letter from the reconstruction factory stating, under protest of telling the truth, it reconstructed the product models for which certification is requested, including the corresponding serial numbers.
- 16) Deliver 1 type sample, and optionally a second sample, one of which is subjected to laboratory tests and the other is safeguarded as a witness in case the results on the first show results of non-compliance, unless the technical provision specifically indicates the obligation to present more than one sample.

▪ **Refurbished Product**

Without Reconditioning Manual:

- 1) Application for certification for one of the indicated schemes, duly requisitioned and signed by the interested party.
- 2) Official identification of the interested party or the legal representative to manage the certification (original for comparison and copying).

- 3) If affiliates, subsidiaries and/or importers are declared, they must present a copy of the official identification of the legal representative of each of them.
- 4) Test requests duly signed by the interested party, for the chosen test laboratory, with the respective models of the type samples, according to Art.11 of the Conformity Assessment procedure and the "Guidelines for accreditation, authorization, designation and recognition of testing laboratories".
- 5) If applicable, original test report issued by a recognized foreign laboratory. (I, II, III, IV)
- 6) Schematic and/or block diagrams showing the technical design characteristics such as transceiver card or radio transmitter with the same arrangement of tracks, integrated circuits, components, antennas, frequencies, and operation technology, among others.
- 7) If necessary, block diagram reflecting how the product will be connected to public telecommunications networks and/or make use of the radio spectrum.
- 8) Technical specifications of the product, showing design characteristics such as frequency(s), power(s) and operating technology(s), among others.
- 9) Instructions or product manuals describing all their functionalities of intended use, with which they were built during their respective process
- 10) Photographs or digital or printed images, internal and external, of the product showing design features such as transceiver card or radio transmitter with the arrangement of tracks, integrated circuits, component, antennas and the like.
- 11) Installation specifications, where applicable.
- 12) The samples of the selected models, in factory closed packaging and identifiable. (I, II, III, IV) .
- 13) Request the certification body to carry out the sampling, in accordance with the NMX-Z-12/2 in force, based on the Simple Sampling Plan for normal inspection with Special inspection level S-1 with an Acceptable Quality Level (EQS) of 2.5, to obtain the type samples that will be subjected to laboratory tests.
- 14) In the event that the number of Product Type Samples does not comply with any specification established in the applicable technical provision and is equal to or greater than the rejection number indicated in the current NMX-Z-12/2 standard, the lot will be rejected, and a letter of non-compliance is issued.

With Reconditioning Manual:

- 1) Application for certification for one of the indicated schemes, duly requisitioned and signed by the interested party.
- 2) Official identification of the interested party or the legal representative to manage the certification (original for comparison and copying).
- 3) If affiliates, subsidiaries and/or importers are declared, they must present a copy of the official identification of the legal representative of each of them.
- 4) Test requests duly signed by the interested party, for the chosen test laboratory, with the respective models of the type samples, according to Art.11 of the Conformity Assessment procedure and the "Guidelines for accreditation, authorization, designation and recognition of testing laboratories".
- 5) If applicable, original test report issued by a recognized foreign laboratory. (I, II, III, IV)
- 6) Schematic and/or block diagrams showing the technical design characteristics such as transceiver card or radio transmitter with the same arrangement of tracks, integrated circuits, components, antennas, frequencies, and operation technology, among others.
- 7) If necessary, block diagram reflecting how the product will be connected to public telecommunications networks and/or make use of the radio spectrum.
- 8) Technical specifications of the product, showing design characteristics such as frequency(s), power(s) and operating technology(s), among others.
- 9) Instructions or product manuals describing all their functionalities of intended use, with which they were built during their respective process

- 10) Photographs or digital or printed images, internal and external, of the product showing design features such as transceiver card or radio transmitter with the arrangement of tracks, integrated circuits, component, antennas and the like.
 - 11) Installation specifications, where applicable.
 - 12) The samples of the selected models, in factory closed packaging and identifiable. (I, II, III, IV)
 - 13) Product Reconditioning Manual.
 - 14) Certificate of the quality management system of the refurbishing factory, as appropriate, issued by an accredited and authorized CO for quality management systems, stating the refurbishing factory complies with the requirements established in NMX-CC-9001-IMNC-2015 and ISO/IEC-9001-2015 or those that replace them, and which includes, within its scope, the quality control of the reconditioning lines of the products to be certified,
 - 15) Letter from the refurbishing and/or rebuilt factory, under protest of truth, that it refurbished the product models for which certification is requested, including the corresponding serial numbers.
 - 16) Deliver 1 type sample, and optionally a second sample, one of which is subjected to laboratory tests and the other is safeguarded as a witness in case the results on the first show results of non-compliance, unless the technical provision specifically indicates the obligation to present more than one.
- B) For certification scheme II, Sample by product model and surveillance for more than one batch, submit the following information:
- 1) Application for certification for one of the indicated schemes, duly requisitioned and signed by the interested party.
 - 2) Official identification of the interested party or the legal representative to manage the certification (original for comparison and copying).
 - 3) If affiliates, subsidiaries and/or importers are declared, they must present a copy of the official identification of the legal representative of each of them.
 - 4) Test requests duly signed by the interested party, for the chosen test laboratory, with the respective models of the type samples, according to Art.11 of the Conformity Assessment Procedure and the "Guidelines for accreditation, authorization, designation and recognition of testing laboratories".
 - 5) If applicable, original test report issued by a recognized foreign laboratory. (I, II, III, IV)
 - 6) Schematic and/or block diagrams showing the technical design characteristics such as transceiver card or radio transmitter with the same arrangement of tracks, integrated circuits, components, antennas, frequencies, and operation technology, among others.
 - 7) If necessary, block diagram reflecting how the product will be connected to public telecommunications networks and/or make use of the radio spectrum.
 - 8) Technical specifications of the product, showing design characteristics such as frequency(s), power(s) and operating technology(s), among others.
 - 9) Instructions or product manuals describing all their functionalities of intended use, with which they were manufactured during their respective process
 - 10) Photographs or digital or printed images, internal and external, of the product showing design features such as transceiver card or radio transmitter with the arrangement of tracks, integrated circuits, component, antennas and the like.
 - 11) Installation specifications, where applicable.
 - 12) The samples of the selected models, in factory closed packaging and identifiable. (I, II, III, IV)
 - 13) Letter of commitment that under protest of telling the truth in which it is pointed out and assumes the responsibility that the type samples presented are representative of the lots to be certified.

- 14) Deliver 1 type sample, and optionally a second sample, one of which is subjected to laboratory tests and the other is safeguarded as a witness in case the results on the first show results of non-compliance, unless the technical provision specifically indicates the obligation to present more than one sample.
- C) For certification scheme III, Sample by product model family and surveillance, submit the following information:
1. Application for certification for one of the indicated schemes, duly requisitioned and signed by the interested party.
 2. Official identification of the interested party or the legal representative to manage the certification (original for comparison and copying).
 3. If affiliates, subsidiaries and/or importers are declared, they must present a copy of the official identification of the legal representative of each of them.
 4. Test requests duly signed by the interested party, for the chosen test laboratory, with the respective models of the type samples, according to Art.11 of the Conformity Assessment procedure and the "Guidelines for accreditation, authorization, designation and recognition of testing laboratories".
 5. If applicable, original test report issued by a recognized foreign laboratory. (I, II, III, IV)
 6. Schematic and/or block diagrams showing the technical design characteristics such as transceiver card or radio transmitter with the same arrangement of tracks, integrated circuits, components, antennas, frequencies, and operation technology, among others. For the definition of family, these characteristics must be preserved in all models integrating the family.
 7. If necessary, block diagram reflecting how the product will be connected to public telecommunications networks and/or make use of the radio spectrum.
 8. Technical specifications of the product or of each of the products integrating the Family, which show the design characteristics such as frequency (s), power (s) and operation technology (s), among others, that in the case of family definition the specifications must be kept in all models that make up the family.
 9. Instructions or manuals of product or models belonging to the family, where all their functionalities of intended use are described, with which they were manufactured during their respective process, in case of families, the functionalities must be preserved in all the models integrating the family.
 10. Photographs or digital or printed images, internal and external, of the product or models that make up the family, showing the design characteristics as a transceiver card or radio transmitter with the arrangement of tracks, integrated circuits, component, antennas and the like, which must be kept in all models of the Family.
 11. Installation specifications, where applicable.
 12. The samples of the selected models or the models that constitute the family, in factory closed packaging and identifiable. (I, II, III, IV) or samples of models intended to be integrated into the family (extension)
 13. Where applicable, original of the definition of product model family and the models thereof that would have to be approved.
 14. Letter of commitment that under protest of telling the truth in which it is pointed out and assumes the responsibility that the type samples presented are representative of the family of product model to be certified.
 15. Deliver 2 type samples of two different models that make up the Family of product models, optionally two more samples of the same models of the first two, except in cases where the technical provision indicates the obligation to submit more samples of the same model, two will be sent for testing and the other two as witnesses.
- D) For certification scheme IV, Sample by telecommunications or broadcasting device and surveillance, submit the following information:

- 1) Application for certification, duly requested and signed by the interested party, his legal representative or himself in the case of a natural person with business activity.
- 2) Official identification of the interested party or the legal representative to manage the certification (original for comparison and copying).
- 3) If affiliates, subsidiaries and/or importers are declared, they must present a copy of the official identification of the legal representative of each of them.
- 4) Test requests duly signed by the interested party, for the chosen test laboratory, with the respective models of the type samples, according to Art.11 of the Conformity Assessment procedure and the "Guidelines for accreditation, authorization, designation and recognition of testing laboratories".
- 5) If applicable, original test report issued by a recognized foreign laboratory. (I, II, III, IV)
- 6) Schematic and/or block diagrams showing the technical design characteristics such as transceiver card or radio transmitter with the same arrangement of tracks, integrated circuits, components, antennas, frequencies, and operation technology, among others.
- 7) Technical specifications of the product or equipment that show the technical design characteristics such as frequency(s) and operating technology(s), among others.
- 8) Instructions or manuals of the products or equipment where all their functionalities are described, as well as their intended use, with which they were built during their respective processes, which must be kept in all the products or equipment that integrate the new relationship.
- 9) Brochures, photographs or digital or printed images, internal and external, of the products or equipment that show the technical design characteristics such as transceiver card or radio transmitter with the arrangement of tracks, integrated circuits, component, antennas, which must be kept in all products or equipment that integrate the aforementioned relationship.
- 10) The free format document indicated in Art 26 of the Conformity Assessment procedure and including the brand, models, trade name, technical and operational information and identification number of the firmware and hardware version (if applicable).
- 11) Letter of commitment that under protest of telling the truth in which it is pointed out and assumes the responsibility that the type samples presented are representative.
- 12) Deliver 1 type sample, and optionally a second sample, one of which is subjected to laboratory tests and the other is safeguarded as a witness in case the results on the first show results of non-compliance, unless the technical provision specifically indicates the obligation to present more than one sample.

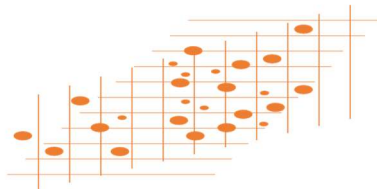
For NOM-221-SCFI-2017:

In addition to the above:

- a) Manufacturer's Letter of Commitment to Compliance and IMEI Relationship in the format contained in Annex A of IFT-011-2017, part 1

In the event that the applicant does not have the Manufacturer's IMEI List, he must sign and deliver to the Certification Body the following:

- a) Letter of Commitment to Compliance and Letter of Commitment of IMEI Unique and Valid in the format contained in Annex A of IFT-011-2017, part 1.
- b) Certified copy issued by a public federate of the current authorization as a Certified Company in the modality of Marketer and Importer or Authorized Economic Operator, in terms of the rules issued for this purpose by the Ministry of Finance and Public Credit and published in the Official Gazette of the Federation.
- c) Where appropriate, a certified copy issued by a public federate of the power of attorney that empowers the applicant as legal representative.
- d) Official identification of the applicant.



IMPORTANT NOTICE: Translations are for the customer's use only. Customer may not use nor authorize the use of this translations for any other purpose including publication, reproduction, distribution, lease and/or sale in any format including but not limited to, web-based electronic or print media such as, pdf, html, paper copy, on-line and subscription service. UL de México, S.A. de C.V. does not warrant or guarantee the accuracy of the translation. Customer must consult original text for any questions or discrepancies in the translated material.