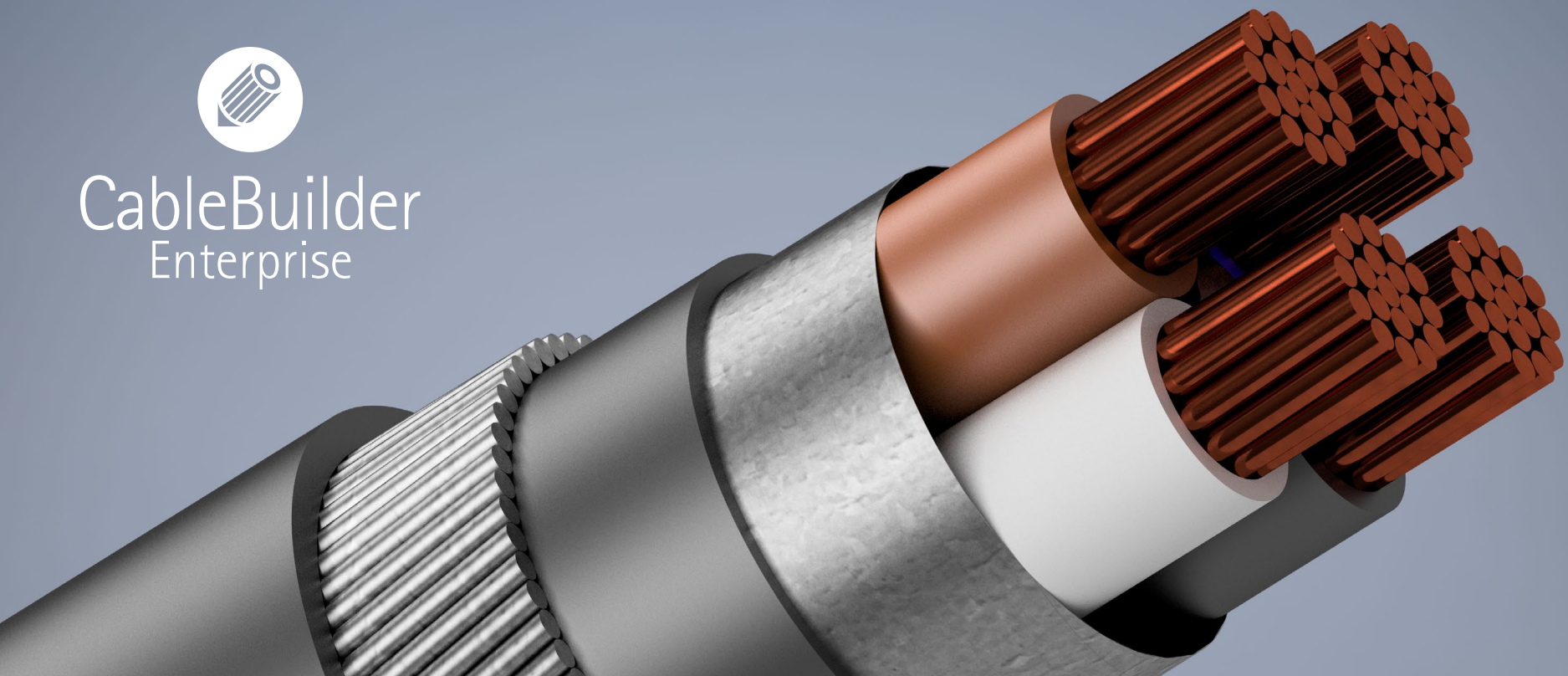




CableBuilder  
Enterprise



---

# Enterprise-level software for cable design, costing and quoting

With integration into ERP and MES



Solutions

Safety. Science. Transformation.™





# CableBuilder Enterprise

CableBuilder Enterprise was born out of the demand within the wire and cable industry to simplify the complex management of cable design. It helps enable users to seamlessly manage product data through the workflow milestones of design, quotation, ordering, quality assurance and enterprise resource planning (ERP) integration.

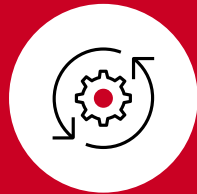
The software helps enable productivity gains through the efficient handling of product data, enhancing continuity and data integrity throughout the cable lifecycle.

## Key features of CableBuilder Enterprise

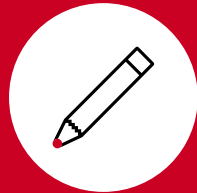
- Fully configurable by customer
- Simple to use software based on web technology
- Modular software segmented based on functionality
- Suitable for use in a single or multi-plant environment, where alternative bills of material (BOMs) and routings are required
- Flexibility helps you to deploy the core Designs module and introduce additional modules as need and requirements dictate
- Compatible with all cable types and constructions
- Quality assurance through workflow and versioning with full documentation retention and change history



**Faster enquiry-to-order cycle through automation and integrations**



**Optimize the design team's efficiency as repetitive tasks become automated**



**Automatically generate drawings (2D/3D), datasheets, catalogues, BOMs, routings, quotes, etc.**



**Optimize accuracy in cable cost calculations for materials and manufacturing cost**



## Customer testimonial

“CableBuilder Enterprise is the right product at the right moment in a time where our company is putting the basis of a digital factory in the future strategy. CableBuilder Enterprise offers both the necessary flexibility to handle our tailor-made customized cables and the high level of detail in process parameters required by our standard articles.”

Luigi Sterli  
Technical and quality manager  
Lapp Camuna Cavi  
2021

## Modular licensing

CableBuilder Enterprise helps you to deploy the core Designs module and add optional modules to suit your business.

### Designs

Core module for cable design, accurate data, costs, BOMs, routings, reports and images in a single or multi-plant environment.

### Quotations

Generate fast, accurate and professional quotations.

### Manufacturing

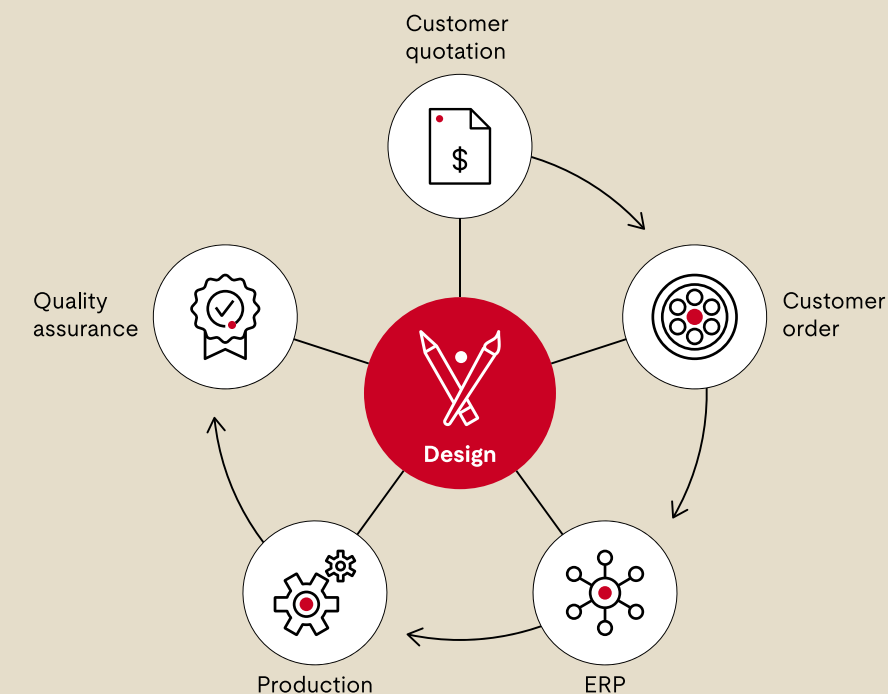
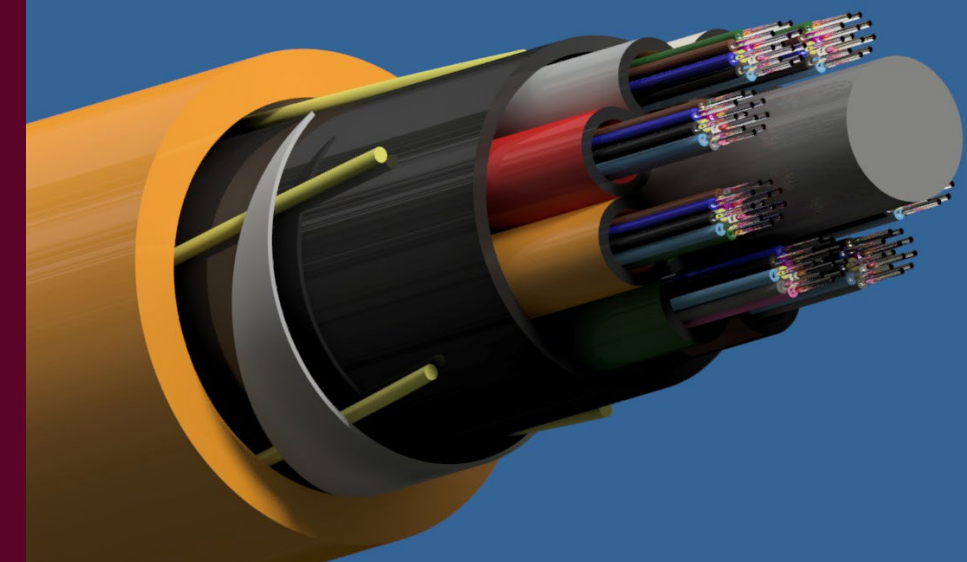
Generate accurate costs and production orders based on customers' required lengths.

### QA orders

Track and audit production quality for all customers orders.

### 3D

Photo-realistic images, auto-generated images.





# Designs module

The Designs module is a feature-rich application that helps you to reduce design time, produce professional drawings, datasheets and catalogs, and provide insights that help users identify opportunities to reduce scrap and rework.

The Designs module works for every type of cable.

- Fully configurable by customer
- Create the physical design of any cable in a single or multi-plant environment
- Design change history and version control
- Automatically create the BOM and routing
- Helps improve the accuracy of calculating material and manufacturing cost
- Easily develop automations based on cable types and standards
- Automatically create datasheets and drawings from design data
- Exchange all relevant information with third-party systems, e.g., ERP



# Quotations module

The CableBuilder Enterprise Quotations module is designed specifically for the wire and cable manufacturing industry and can be customized to individual customer needs, allowing users to produce quick and accurate quotations.

- Fully configurable by customer;
- Customizable quotation terms and conditions to suit individual needs
- Customer database with configurable fields that can be synchronized with other systems
- Quotation change history and version control
- Workflow and approval by user group
- Intelligent quotation numbering
- Packaging/drum costing based on cable parameters
- Consideration of strategic metal price fluctuations



# Manufacturing Simulation module

Designed to generate production orders, the Manufacturing Simulation module models the real world through user-configurable machine and production rules. Once the rules are defined, production costs and capabilities can be simulated.

- Fully configurable by customer
- Accurate quotations based on accurate costings
- Optimization of inter-process spools to help reduce scrap and setup times
- Accurate manufacturing instructions, specific to every order to reduce occurrences of under-length or over-length
- Determination of the feasibility of production to ensure only feasible orders are accepted
- A length-based production order generator that can integrate to any ERP system
- Material and machine utilization based on length
- Reduction of material and time losses by machine and spool optimization



# Quality Assurance Orders module

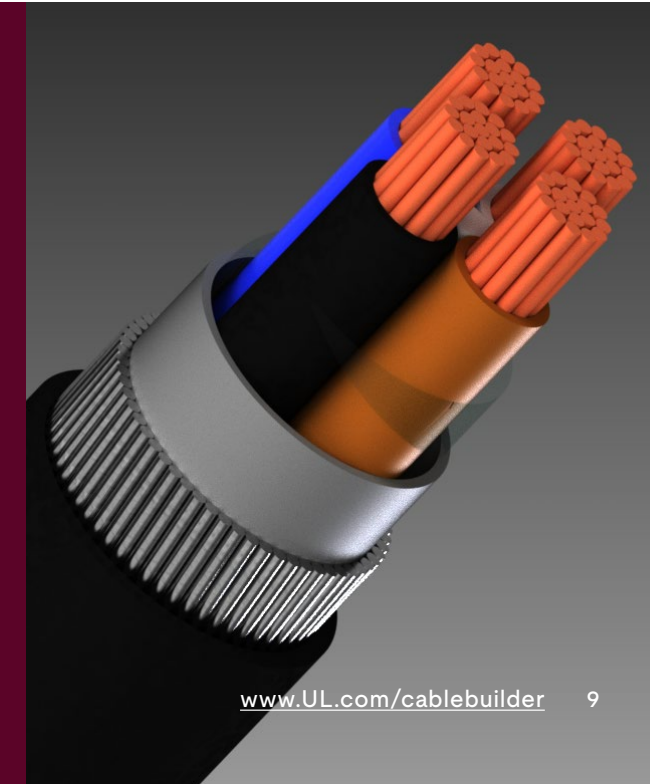
Quality assurance is a fundamental requirement for all manufacturers. The QA Orders module helps you identify and rectify quality issues that would otherwise have significant ramifications on reputation and profits.

- Fully configurable by customer
- QA order change history and version control
- A single repository for all quality checks with a complete audit trail
- Increase reputation
- Systematically track and audit production quality, manage non-conformance and generate test certification

## 3D module

**In-browser functionality to create professional 3D images for use in reports, datasheets, and catalogs.**

- Browser-based, with no additional need for software
- Fast-loading and high performance
- 3D Gallery and 3D Drawing buttons available from the design overview screen
- Fast exporting and downloading of images





# Key features

- |    |   |   |
|----|---|---|
| 1  | Fully configurable by customer                    | • |
| 2  | Cable design for all types of cables              | • |
| 3  | Flat cable design structure                       | • |
| 4  | Multi-level design structure                      | • |
| 5  | Automatic machine and machine parameter selection | • |
| 6  | Alternative machines per operation                | • |
| 7  | Bill of material generation                       | • |
| 8  | Routing generation                                | • |
| 9  | Design version control                            | • |
| 10 | Complex datasheet generation                      | • |
| 11 | Mass update of attributes                         | • |
| 12 | Mass update material replacement                  | • |
| 13 | Mass update attribute setting                     | • |
| 14 | Roll-back mass updates if a mistake is made       | • |
| 15 | Cross section 2D/3D drawings                      | • |
| 16 | Factory works instructions                        | • |
| 17 | Data export to Excel                              | • |
| 18 | Bespoke ERP integration                           | • |
| 19 | Quotations  | • |
| 20 | Workflow and approval for all modules             | • |
| 21 | Suitable for multi-plant companies                | • |





**[UL.com/Solutions](https://UL.com/Solutions)**

© 2024 UL LLC. All rights reserved.